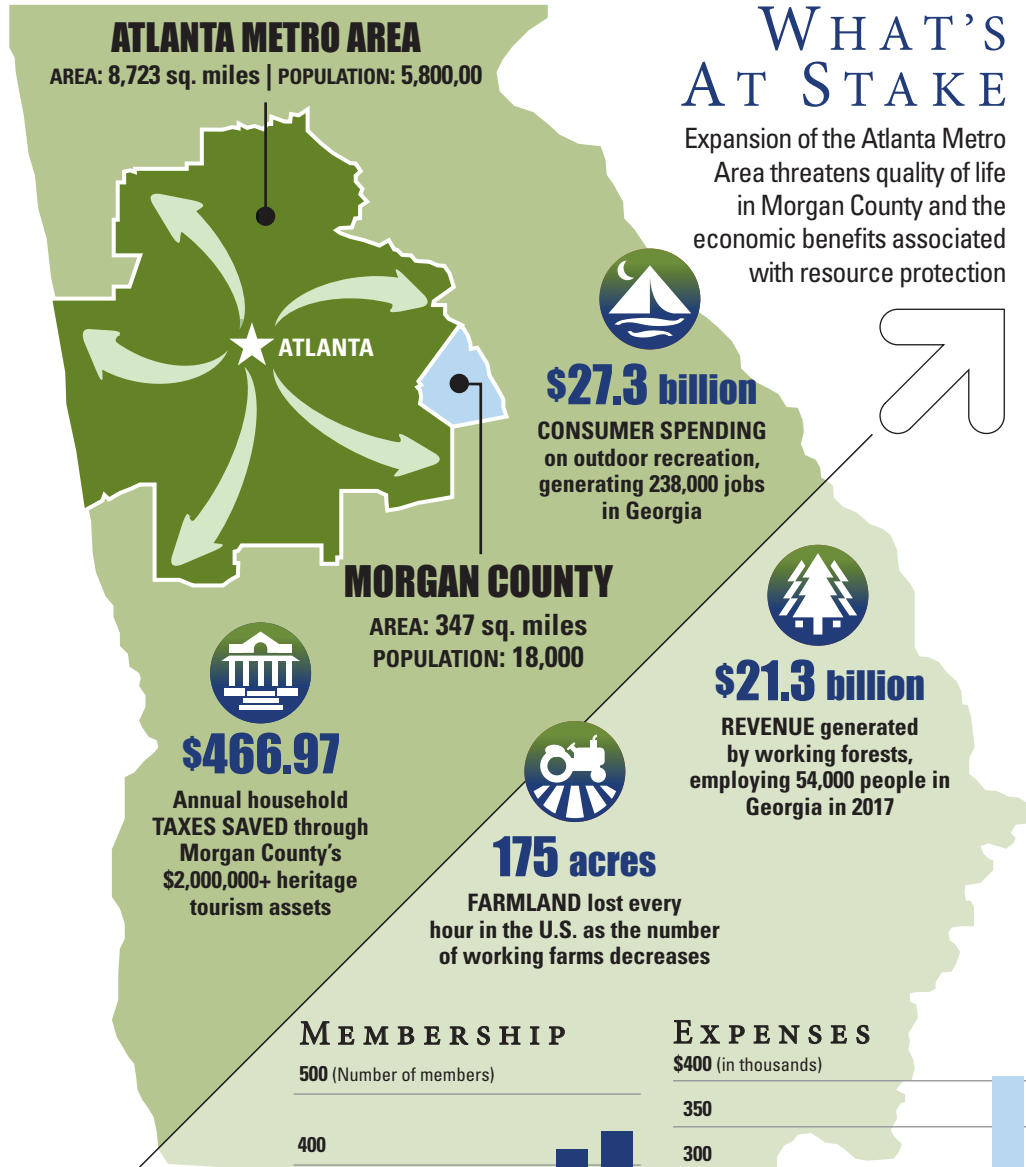




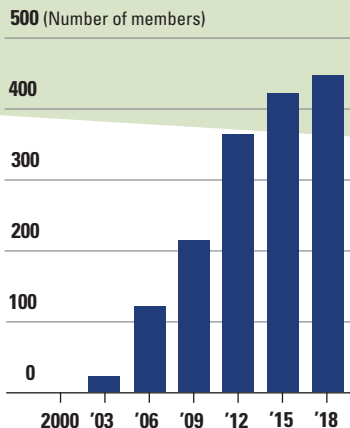
**MADISON-MORGAN
CONSERVANCY**

Recipient of the
2019 Governor's Award for the Arts & Humanities

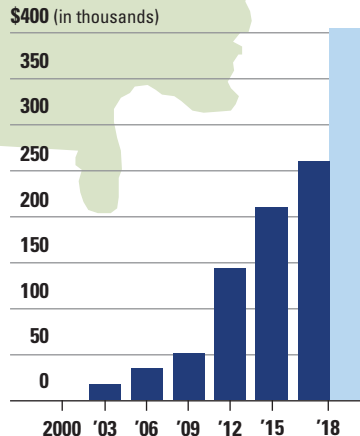
**PROTECTING FARMS,
FORESTS, and FRONT PORCHES
for FUTURE GENERATIONS**



MEMBERSHIP



EXPENSES



Categories of Expenses: ■ Operations ■ Endangered Properties Revolving Fund

VITALS
More members =
Better quality of life

**WHAT'S
AT STAKE**

Expansion of the Atlanta Metro Area threatens quality of life in Morgan County and the economic benefits associated with resource protection

Impact since 2000

EDUCATION & ADVOCACY

7,300 PEOPLE reached through 66 educational forums

450 Dues-paying MEMBERS

RESOURCE PROTECTION

4,500 ACRES of wildlife habitat, farmland, and historic landscapes that are forever protected by conservation easements donated by private landowners

5 HISTORIC ASSETS protected and/or rehabilitated, including the Foster-Thomason-Miller House (first Endangered Properties Revolving Fund project), Sugar Creek Church, and Wallace Grove School

FARM TO MARKET ALLIANCE

1st FARM TRAIL in Georgia, FARMeander, developed and published for five years

3,100 STUDENTS in the Morgan County Charter School System have access to local food through the Farm-to-School Program

TECHNICAL ASSISTANCE

33 ACRES OF GREENSPACE forever protected by transferring development rights from natural areas into developing areas through Madison's newly created TDR program

4 HISTORIC PROPERTIES listed on the National Register of Historic Places or on the Centennial Farm Register