



METROPOLITAN ATLANTA RAPID TRANSIT AUTHORITY

REQUEST FOR INFORMATION

I38342

RAIL CAR LIFE EXTENSION PROGRAM





2424 Piedmont Road, NE
Atlanta, GA 30324
404-848-5000

August 1, 2016

TO: ALL PROSPECTIVE PROPONENTS

**SUBJECT: REQUEST FOR INFORMATION (RFI) NUMBER I38342
RAIL CAR LIFE EXTENSION PROGRAM**

The Metropolitan Atlanta Rapid Transit Authority (MARTA) is in the process of preparing a solicitation for its Rail Life Extension Program. MARTA is seeking your input regarding industry standards, best practices, and recommendations for its CQ310 and CQ311 rail cars. MARTA intends to thoroughly review your responses for potential incorporation into its Invitation for Bids (IFB).

Please provide one (1) original and five (5) USB drives (a.k.a., jump or flash drives) of your information in response to this request no later than August 30, 2016 at 2:00 p.m. (local time) at 2400 Piedmont Road N.E., Atlanta, GA 30324-3330, Attention: Contract Control.

Please address all questions in writing to the attention of Nicholas Waters, Contract Specialist II at nwaters@itsmarta.com.

Sincerely,

A handwritten signature in black ink, appearing to read "Lisa DeGrace". The signature is fluid and cursive, with a long horizontal stroke at the end.

Lisa DeGrace
Chief Contracts Officer

**REQUEST FOR INFORMATION I38342
RAIL CAR LIFE EXTENSION PROGRAM
TABLE OF CONTENTS**

PART 1: INSTRUCTIONS TO RESPONDENTS

PART 2: BACKGROUND INFORMATION

PART 3: QUESTIONS

PART 1: INSTRUCTIONS TO RESPONDENTS

- 1.1 Definitions:** The following definitions shall apply when used throughout this Request for Information ("RFI"):
- (a) **Firm(s):**
 - (b) **Respondent:** Each Firm submitting a response to this RFI.
 - (c) **Response:** A written response to this RFI prepared by a Respondent and submitted to the Metropolitan Atlanta Rapid Transit Authority's ("MARTA") Office of Contracts, Procurement and Materials ("CPM").
- 1.2 Procurement Questions; Prohibited Contacts:** Any questions regarding this RFI should be submitted in writing to MARTA's contact person, **Mr. Nicholas Waters, Contract Specialist II** by e-mail at nwaters@itsmarta.com, on or before **August 15, 2016 at 2:00 p.m. (local time)**. Questions received after the designated period will not be considered. Any response made by MARTA will be provided in writing to all Respondents by an addendum to this RFI. It is the responsibility of each Respondent to obtain a copy of any addendum issued for this RFI by monitoring MARTA'S website at www.itsmarta.com. No Respondent may rely on any verbal response to any question submitted concerning this RFI. ***All Respondents and representatives of any Respondent are strictly prohibited from contacting any other MARTA employees or any third-party representatives of MARTA on any matter having to do with this RFI. All communications by any Respondent concerning this RFI must be made to MARTA's contact person.*** Respondents are required to conduct the preparation of their submission to MARTA with professional integrity and free of lobbying and similar types of behavior intended to influence MARTA. As used in this RFI, the terms, "Firm(s)," "Respondent" and "MARTA" shall be deemed to include such entities' respective officers, directors, agents, contractors, subcontractors, professional service providers, employees and any other person or entity owned, controlled or affiliated with such entities.
- 1.3 Submission Deadline:** Responses to this RFI must be received by MARTA's Office of Contracts, Procurement and Material at 2400 Piedmont Road N.E., Atlanta, Georgia 30324-3330, on or before **August 30, 2016 no later 2:00 p.m. (local time)**.
- 1.4 Representation:** By submitting a Response to MARTA, Respondent acknowledges, represents and warrants that: (a) it has read the entire RFI and acknowledges that Respondent shall be bound by the terms and conditions stated herein; (b) the signatory to the Response is the Respondent (or Respondent's duly authorized agent or employee of the Respondent with the authority to bind Respondent hereto); (c) any information or disclosure provided in response to this RFI is an accurate representation up to and including the date Respondent submitted its Response to MARTA; and (d) it agrees that it will voluntarily notify MARTA immediately if any information or disclosure provided to MARTA during any part of this RFI process changes, is no longer accurate or would be

misleading in any way.

Additionally, Respondents are advised that in the subsequent IFB, Respondents will be required to represent and warrant to MARTA that none of the following, during term of the contract or for one year thereafter, have or will have any interest, direct or indirect, in the contract with MARTA or in any part of the proceeds, hereof: (i) members of the MARTA Board of Directors; (ii) officers or employees or former employees of MARTA, or of any representative of MARTA in the administration of this contract, pursuant to MARTA's Code of Ethics. This Section also applies to members of or delegates to the United States Congress or the Georgia legislature; and members of the governing body, and all other officers and employees, of the City of Atlanta or the Counties of Fulton and DeKalb.

- 1.5 Availability of Electronic Documents.** This RFI is being made available by electronic means. By responding to this RFI, Respondent acknowledges and accepts full responsibility to ensure that it is responding to the correct form of RFI, including any addenda issued by MARTA's Office of Contracts, Procurement and Material (CPM). Respondent acknowledges and agrees that in the event of a conflict between the RFI in the Respondent's possession and the version maintained by CPM, the version maintained by CPM shall govern. The RFI document is available at www.itsmarta.com.
- 1.6 Rejection of Responses; Cancellation of RFI; Waiver of Technicalities:** MARTA reserves the right to reject any Response or all of the Responses, to waive any technical defect in a Response or to cancel this RFI at any time for any reason or no reason.
- 1.7 Georgia Open Records Act:** Information provided to MARTA is subject to disclosure under the Georgia Open Records Act ("GORA"). Pursuant to O.C.G.A. § 50-18-72(a)(34), "[a]n entity submitting records containing trade secrets that wishes to keep such records confidential under this paragraph shall submit and attach to the records an affidavit affirmatively declaring that specific information in the records constitute trade secrets pursuant to Article 27 of Chapter 1 of Title 10 [O.C.G.A. § 10-1-760 et seq.]."
- 1.8 Protests:** Any protest or objection to this RFI or the solicitation process related to this RFI must be submitted, in a timely manner, in accordance with the Protest Procedures set forth on MARTA's website at <http://www.itsmarta.com/Protest-10359.pdf>.

PART 2: BACKGROUND INFORMATION

marta | METROPOLITAN ATLANTA RAPID TRANSIT AUTHORITY

Meet
THE Fleet



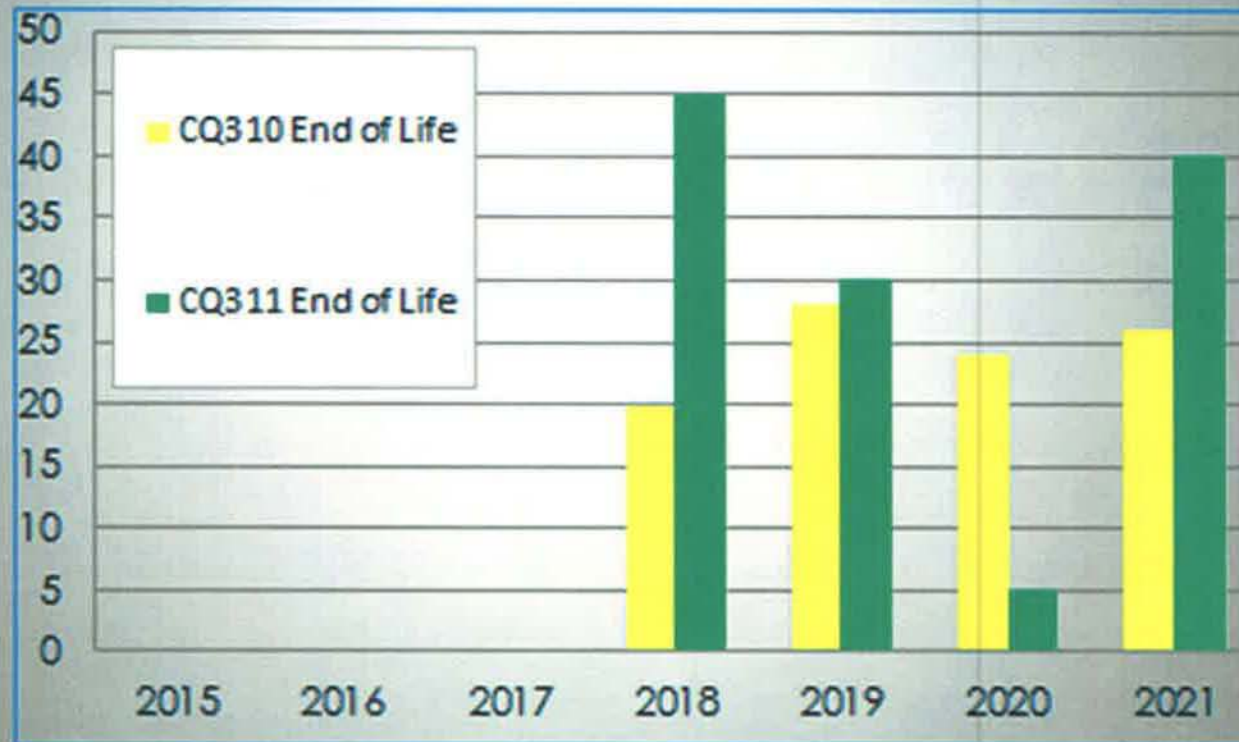
SUMMARY OF THE TWO PROGRAMS

- Rail Car Life Extension Work
 - Contract out work on 2/3 of MARTA's fleet
 - Prescriptive overhaul of components
 - Expected bid award: 2017

FLEET AGE SUMMARY

Car Series	Carbuilder	Quantity	Year Built	Age	Mid-Life OH
CQ310	Franco-Belge	96	1979-81	34-36 yrs	2006-2008
CQ311	Hitachi	120	1984-88	27-31 yrs	2005-2008
Total		216			

MARTA'S RAIL CARS ARE REACHING END OF LIFE

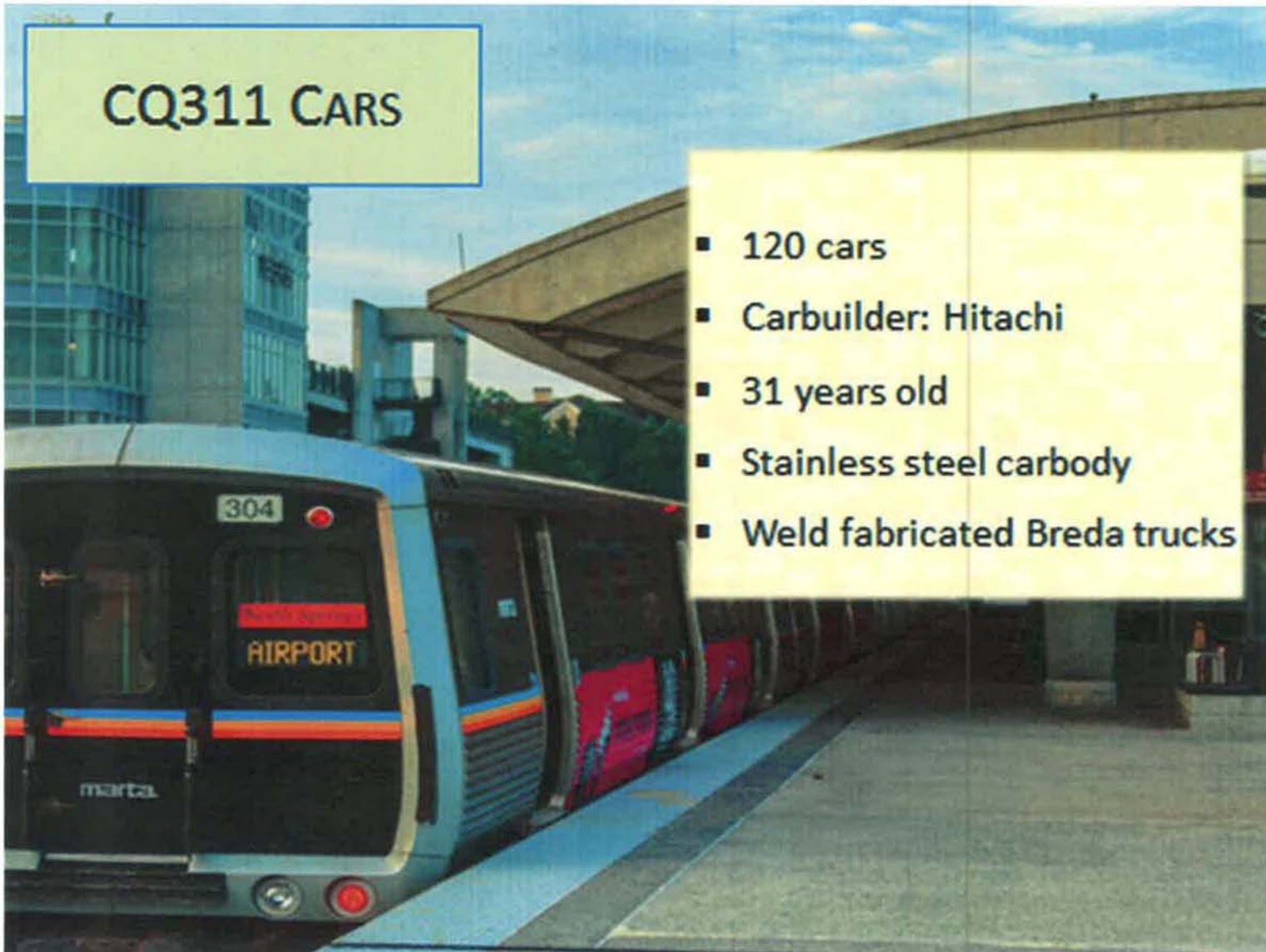


CQ310 Cars

- 96 cars
- 36 years old
- Carbuilder: Franco-Belge
- Contain asbestos
- Aluminum carbody
- Cast trucks (Rockwell)

CQ311 CARS

- 120 cars
- Carbuilder: Hitachi
- 31 years old
- Stainless steel carbody
- Weld fabricated Breda trucks



RAIL CAR CONFIGURATION

- 316 rail cars – all married-pairs
- Drawbar between pairs
- Operator's cab:
 - Two cabs per pair
 - Full-width cab
 - Inactive cabs permit walk-through



RAIL CAR DIMENSIONS

- 75' long
- 10'-6" wide
- Floor height: 44" ATOR
- 34.5" wheels
- 79" door height
- 80" min ceiling height



RAIL CAR INTERIOR

- Seats
 - 64 seats per car
 - 1 mobility device berthing areas
 - 4 priority seats
- Baggage storage
- Windscreens
- No floor-to-ceiling poles

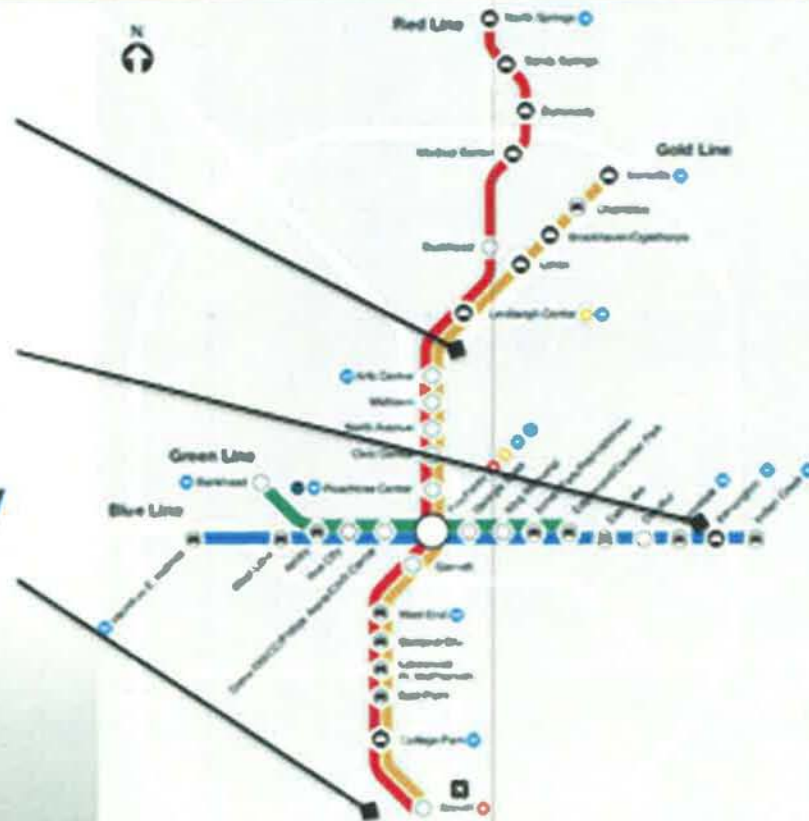


SOME OFFSET WINDSCREENS



MAINTENANCE FACILITIES

- Armour: Inspection, Heavy Maintenance
- Avondale: Running repairs
- South: Campaigns by vendors







LIFE EXTENSION PROGRAM

LIFE EXTENSION PURPOSE

- Keep the fleet in service until it can be replaced
- Prescriptive heavy maintenance, per MARTA procedures or maintenance manuals



LIFE EXTENSION SCHEDULE

- Invitation to Bid: 2016
- Bids Due: Early 2017
- Award: June 2017
- Work Performed: 2017 to 2020



LIFE EXTENSION CONTRACT CONDITIONS

- Work must be done off-site
- Up to 216 cars
- CQ310s to be done first
- Can bid/propose on both programs



LIFE EXTENSION SCOPE OF WORK

- Couplers/Draft Gear
- Trucks/Suspension
- Auxiliary Electric
- Propulsion
- Friction Brakes
- Cab Signal/ATC
- Comms
- Doors
- HVAC
- Carbody



LIFE EXTENSION SCOPE OF WORK

- Carbody
- Couplers/Draft Gear
- Trucks/Suspension
- **Auxiliary Electric**
- Propulsion
- Friction Brakes
- Cab Signal/ATC
- Comms
- **Doors**
- **HVAC**



SAMPLE WORK ON AUXILIARY ELECTRIC

- **Replace ...**
 - Batteries
 - Capacitors
 - Contactors
 - Surge arrestors
- **Option to replace ...**
 - Rolls Royce APS on CQ311s



SAMPLE WORK ON DOORS

- **Replace ...**
 - Weather seals
 - Sensing switches
- **Rebuild ...**
 - Door operators
 - Crew switches
 - Emergency release assemblies
 - Door Hangers
 - Door check assemblies
 - Actuating pin/bracket
- **Upgrade** HAFCO hangers to Vapor hangers (<30% of fleet)



SAMPLE WORK ON HVAC

- **Replace ...**
 - Weather seals
 - Mounting isolators
 - Pressure switches
- **Rebuild ...**
 - Compressor/condenser
 - Evaporator
 - Control unit



PART 3: QUESTIONS

- 3.1** **Life Extension Work Capabilities – Locations to Visit.** MARTA intends to visit vendor facilities to gain a more complete understanding of their capabilities and capacity to perform life extension work for MARTA. MARTA therefore requests respondents to indicate what location(s) it recommends MARTA to visit to see capacity and capabilities for life extension work, associated testing, quality, project management, supply chain management, and related capabilities. MARTA requests that such locations be representative of where the carbuilder would perform the work for MARTA if awarded a contract to perform life extension work for MARTA.

Please provide comments on the following:

- 3.2** Pickup and Delivery Schedule (Car Float)
- 3.3** Warranty
- 3.4** Haul Routes
- 3.5** Subcontracting
- 3.6** DBE Suppliers
- 3.7** Please provide any additional information which should be included in MARTA's IFB.
- 3.8** Additional Comments