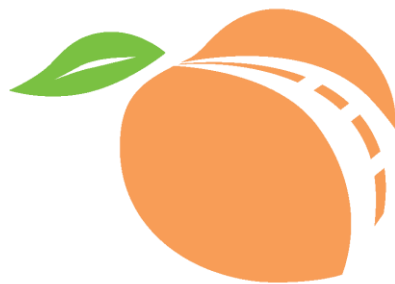


# State Road & Tollway Authority

Ga 400 Demolition Process  
2013



**PEACH PASS**  
*Keep Moving.™*

# Project Goals

- ☐ Safety
- ☐ Maintenance of Traffic
- ☐ Communications

# GA 400 Toll & Demolition Project

- 6.2 miles toll section
- One optional toll road with static rate (\$0.50) for 20 years – GA 400
- Cash and all-electronic lanes
- Generates approximately \$20 million annually
- Toll collection to cease by December 2013

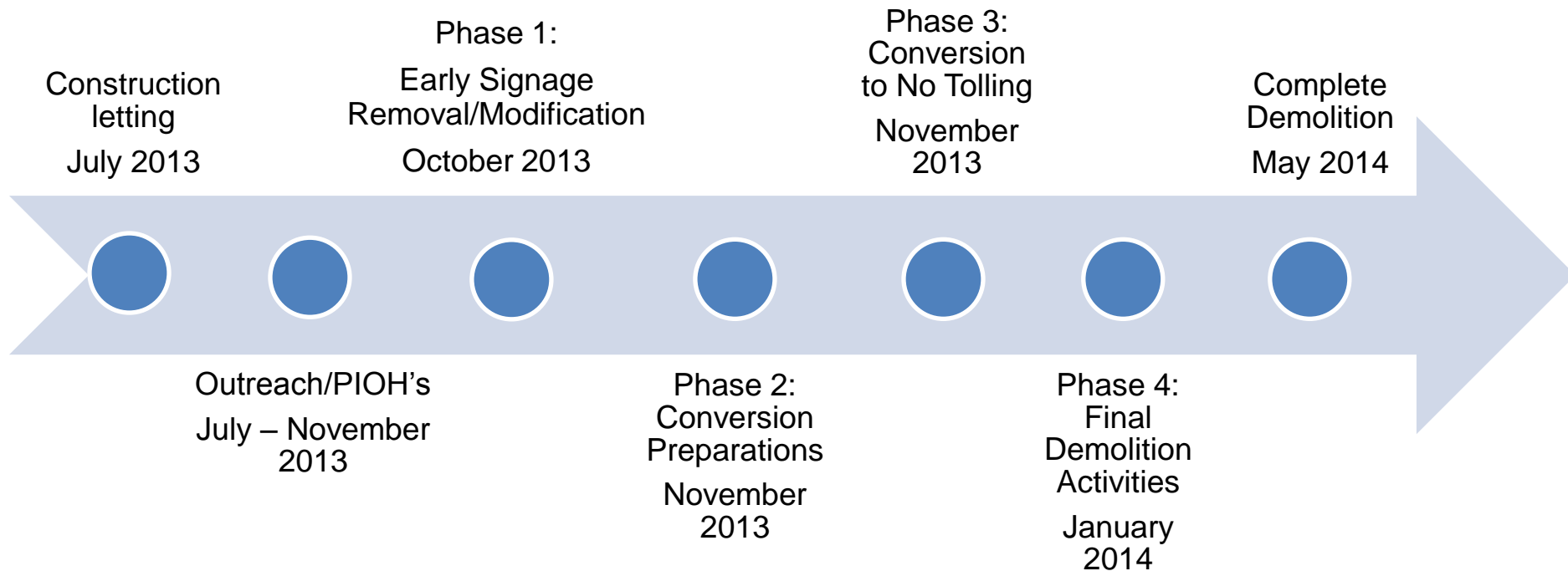


**GA 400  
Toll Plaza**

**Governor  
Nathan Deal  
announcing  
the end of  
GA 400 tolls**



# GA 400 Demolition Timeline



# Process

- ❑ Phase 1: Early Signage Removal/Modification – (October 2013)
  - 4-6 weeks prior
- ❑ Phase 2: Conversion Preparation for No Tolling – (November 2013)
  - 2-3 weeks prior leading to night of No Tolling
  - Install posters in toll booths & portable changeable message signs
  - Begin to shift 2 Peach Pass lanes to accommodate the 3<sup>rd</sup> temporary lane
  - Minor striping placement and removal
- ❑ Phase 3: Conversion to No Tolling (November 2013)
  - Physically close cash lanes, place temporary barrier
  - Flip canopy signs to closed
  - Finish striping the 3<sup>rd</sup> lane
  - Remove barrels open the 3<sup>rd</sup> lane to traffic
- ❑ Phase 4: Final Demolition Activities (January 2014 – May 2014)
  - Toll booth demolition, Toll Plaza close out, etc.
  - Demolition to resume after the holidays

# Phase 1: Early Signage Removal/Modification

- ❑ 4-6 weeks prior
- ❑ Begin Guide Sign Overlays and Removals
- ❑ Remove redundant Toll Plaza Signage



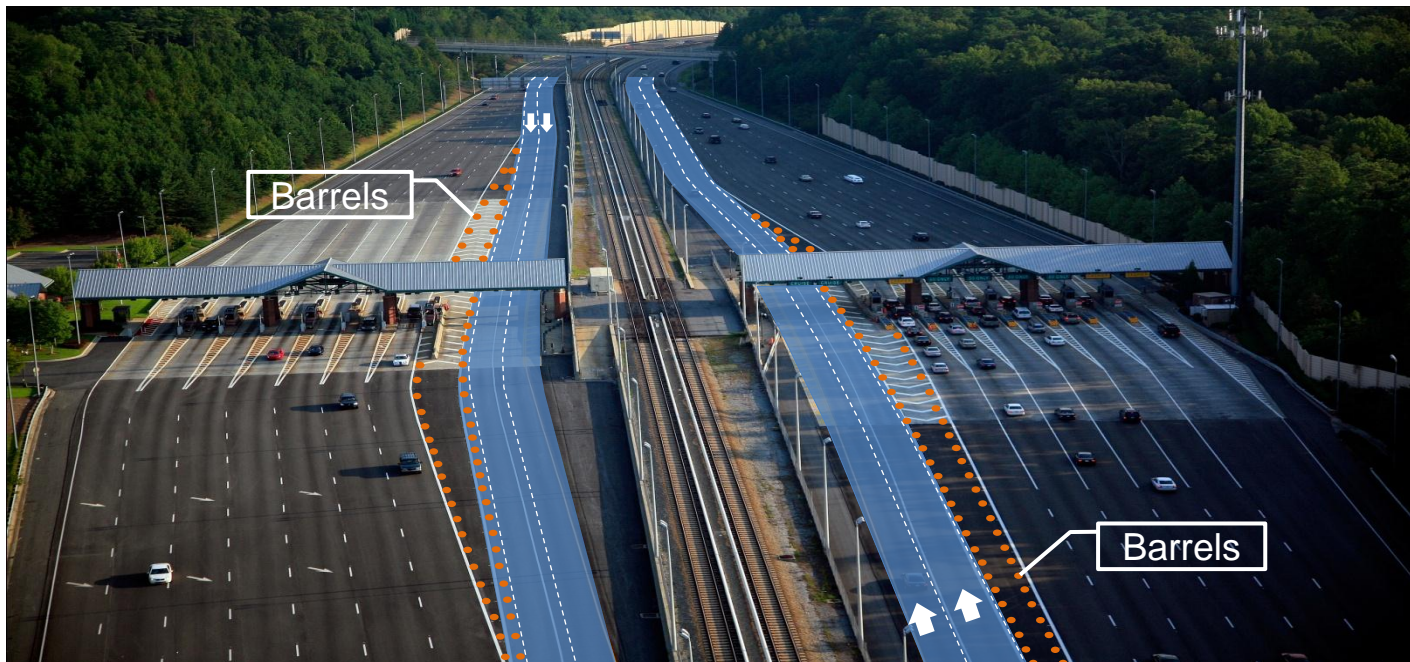
Overlay





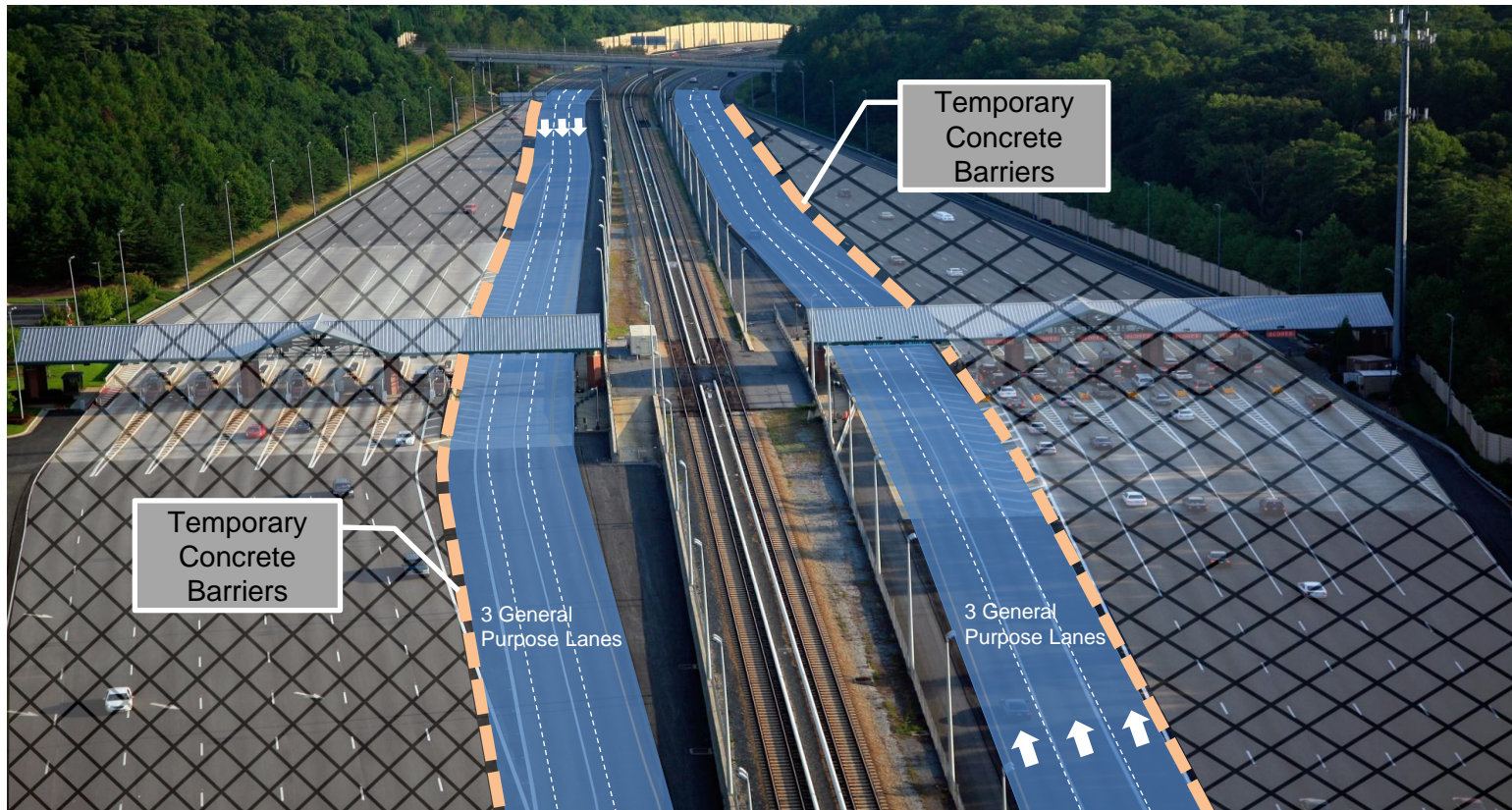
# Phase 2 & 3: Conversion Preparation for No Tolling

- ❑ 2-3 weeks prior to conversion/ Install Portable Changeable Message Signs (PCMS)
- ❑ Begin to shift existing 2 Peach Pass lanes to accommodate the 3<sup>rd</sup> temporary lane; placing barrels, minor striping placement and removal, night time and weekend work
- ❑ Maintain full tolling capacity with minimal traffic delays



# Operations with No Tolling

- ❑ Traffic flows through 3 lanes under the existing GA 400 Peach Pass canopy

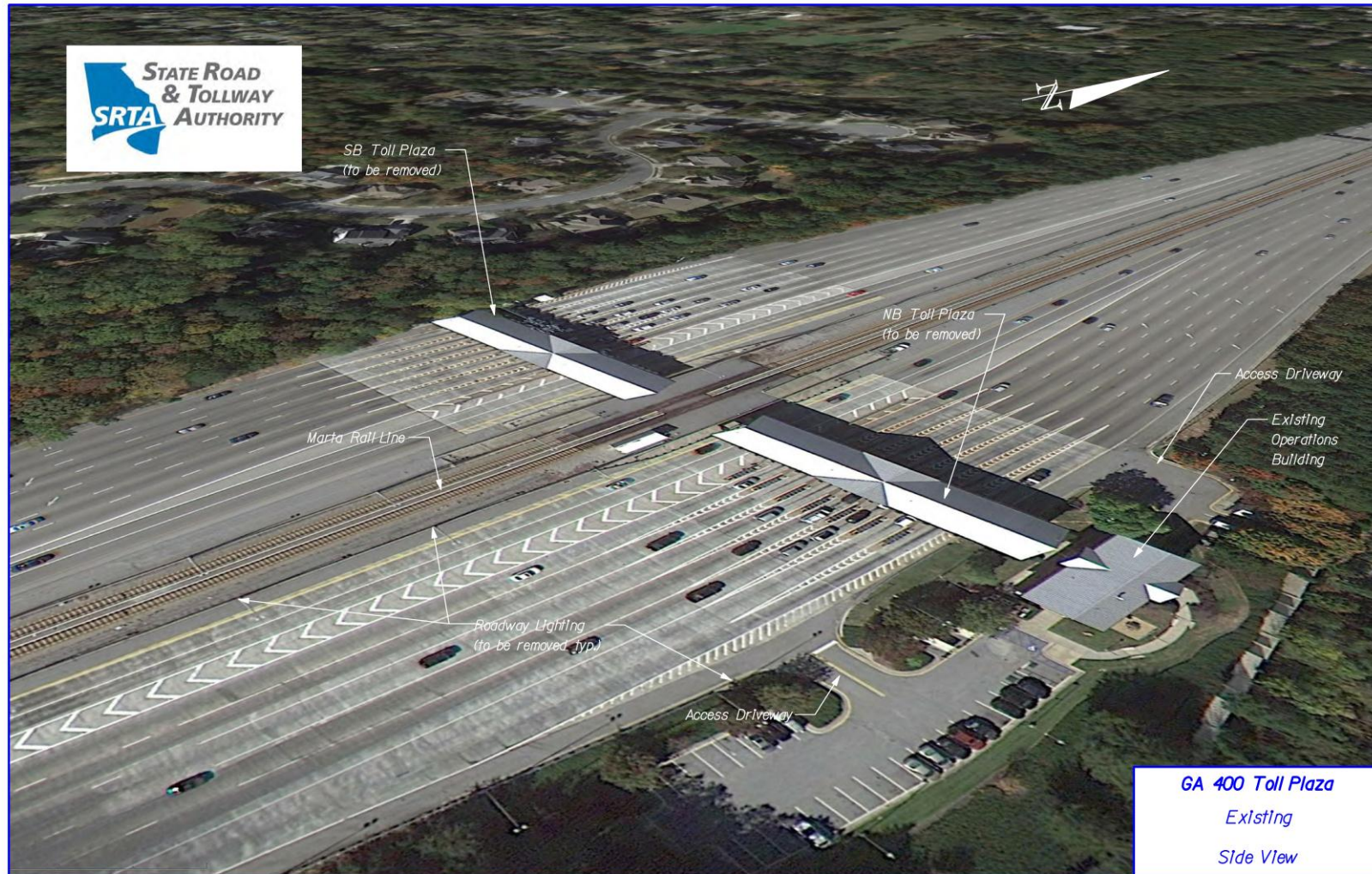




# Phase 4: Final Demolition Activities

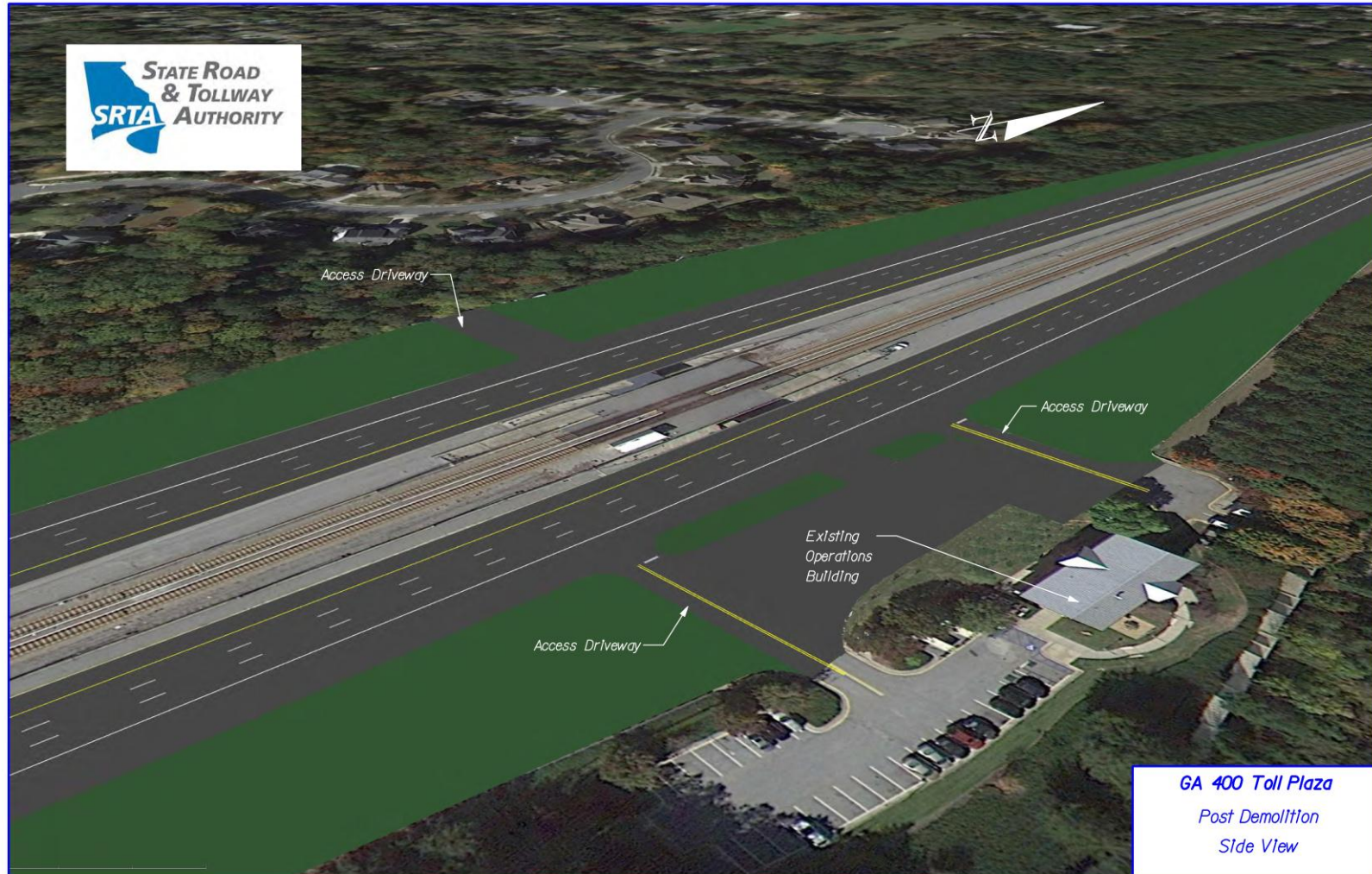
- ☐ Remaining signage to be removed
- ☐ No “Heavy Demolition” work (canopy removal) until after the holidays to avoid traffic impacts
- ☐ Process inventory and clean out Toll Plaza
- ☐ All activities complete by May 31<sup>st</sup>, 2014

# Pre-Demolition Toll Plaza View





# Post-Demolition Toll Plaza View



# GA 400 Projects

## *\$60 Million Committed in Corridor*

Funding 14  
transportation  
improvement  
projects with tolls



I-85/GA 400 Connector Ramps



MARTA Buckhead Pedestrian Bridge



HERO Units  
Expanded Emergency  
Response